

Double Weaves and Four-Color Weft Mixes

© Patricia Williams 2001

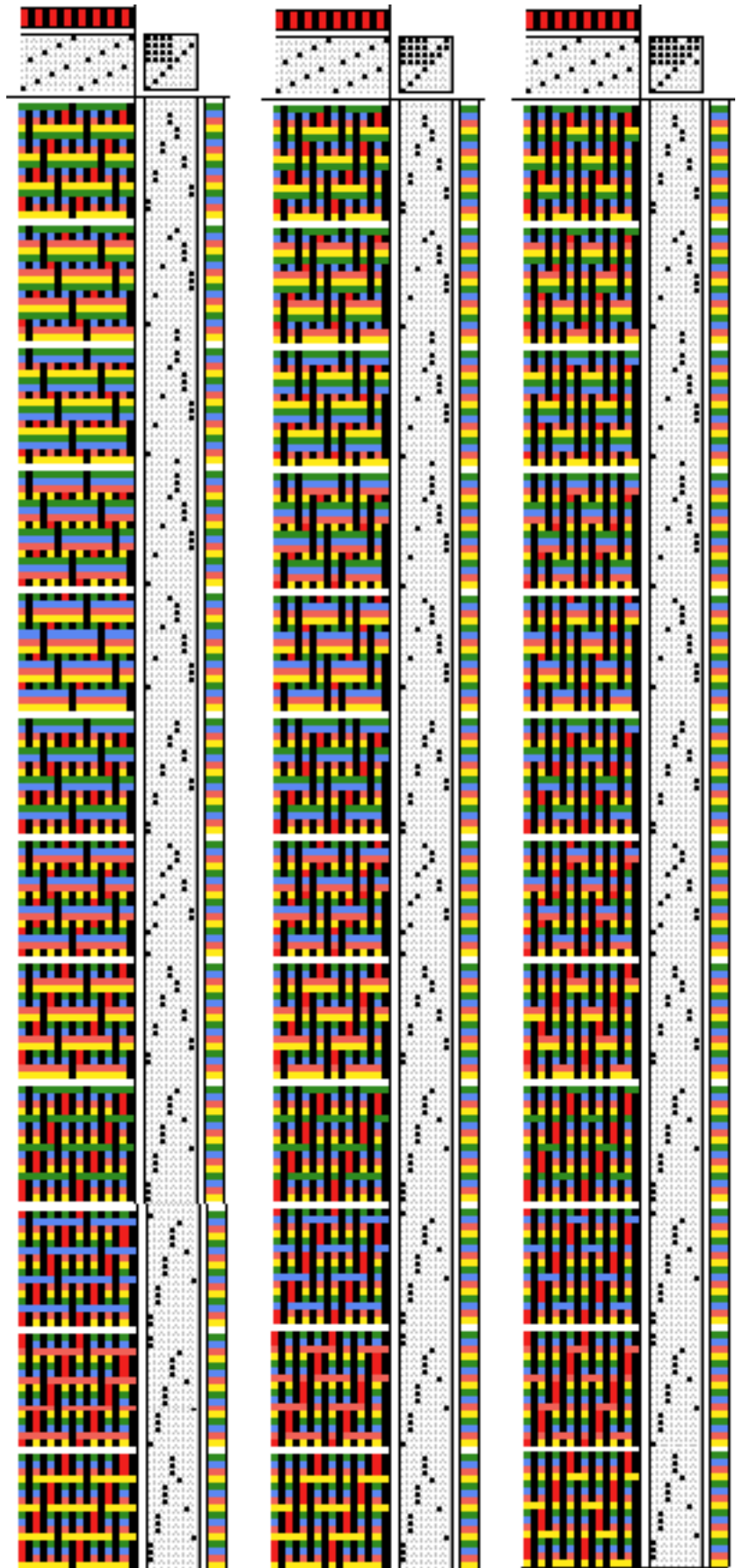
Recently, I wanted to use many more colors in a design than could possibly be managed as separate wefts (at least without tapestry weaving or lots of inlay work), and I had many yards of a one-color warp on the loom. I decided to see how many colors could be blended from a four-color weft sequence by using weaves with different warp involvement on the top layer, and a simple weave on the bottom layer.

The first series of color mixes, on this page, has a 1/3 twill on the back layer, and either a 1/3, 2/2 or a 3/1 twill on the top layer. For each top layer twill, I designed weaves that would allow one, two and three colors to show, in different sequences. Because more warp showed in the 3/1 twills than in the

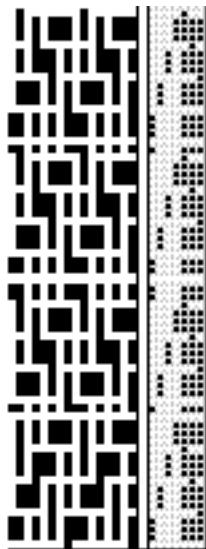
1/3 twills over 1/3 twill

2/2 twills over 1/3 twill

3/1 twills over 1/3 twill



four 1/3 twills over a 1/3 twill --
peg plans and weave structures



1/3 twills, for example, the warp also affected the color seen on the top layer. For another series of weaves, I used a 7/1 satin on the bottom layer and similar weaves on the top, as seen on this page.

Although these weaves were intended for use on a TC-1 loom, they could also be used on a dobby loom. It was very easy to check the accuracy of the drafts in WeaveMaker by looking at the reverse side of the weaves. It was also easy, and useful, to convert the various weaves to peg plans as well as to structures suitable for .wif export into other software, as in the example at the bottom left of the previous page. I will certainly use this approach to double weave drafting again.

