

# Another Look at Layers

----- Patricia Williams ©1998

Adobe Photoshop, PageMaker



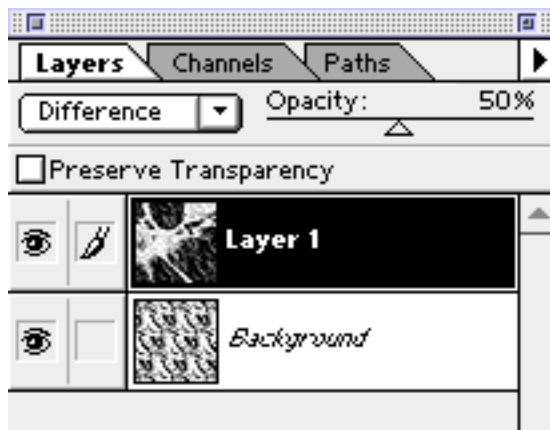
1.



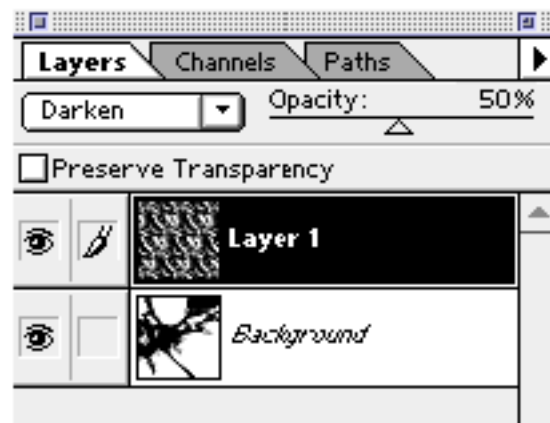
2.

Using 1:1 pickup lamps, I have woven several examples of overall textures (see my 1997 contribution) and transformed them into dimensional surfaces by subjecting them to the cloque process. Although the results of these experiments were intriguing, they were not sufficiently satisfying in themselves. I began to wonder how I might use these textural effects in compositional areas, and how to visualize the possibilities.

I opened a black and white image of one of the textures in Photoshop (1), and then opened a black and white image of a composition derived from a photograph of a portion of Lake Huron beach rocks. After cropping the second image and resizing it so it was the same size as the textural image (2), I copied and pasted it onto the textural image. This process made the original textural image the background and the rock composition image



3.

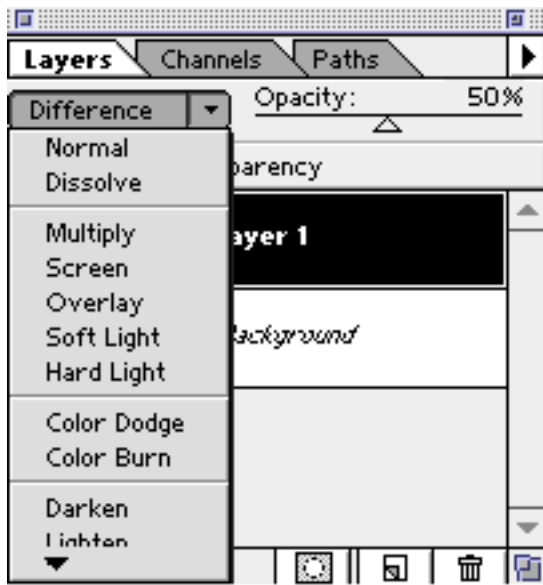


4.

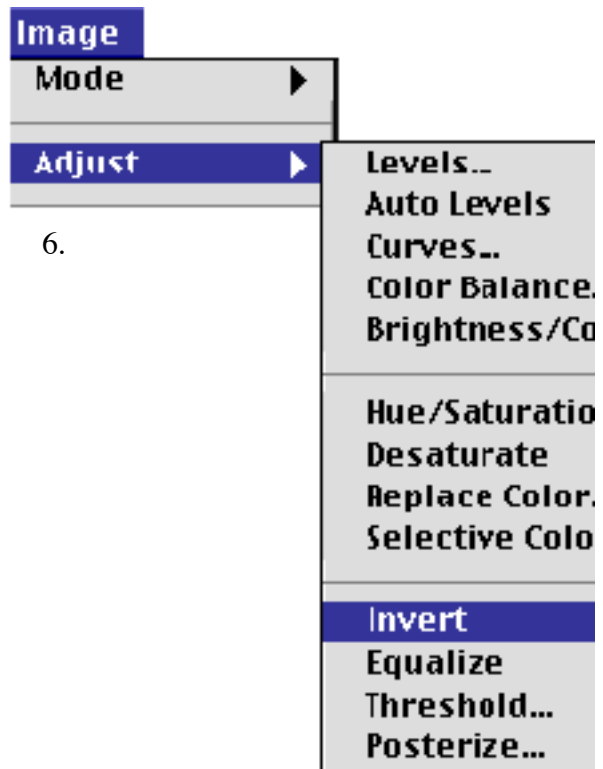
Then I began experimenting with the layer blending and image adjustment options which are available in Photoshop. Variables I worked with included:

- which image was used as the background image
- which image was on the top layer (4) (this is the image which can be affected by the blending options)
- the amount of transparency of the image on top
- which image in the stack was active
- different blending options (5)
- different image adjustment options (6)

After an hour or two, I had about fifty different images to consider. Because the initial images were black and white rather than color or greyscale, only nine of the sixteen blending options were useful. Depending on which image was active and on top, some of those nine were not useful in particular instances.



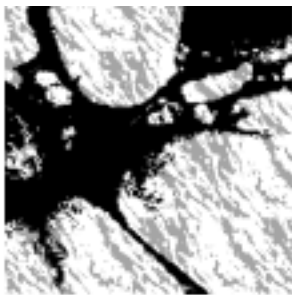
5.



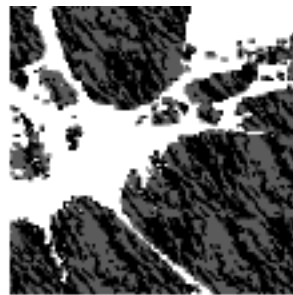
6.

Though some of the fifty images were just nice to look at, others were helpful for visualizing some approaches to the original problem I faced. As I considered their implications for interpretation in 1:1 pickup lampas intended to be subjected to the cloque process, I began to visualize which areas might be flat and which dimensional, as well as possible color/value choices for the cotton and silk warps and wefts I would be using (see 7 - 14 below).

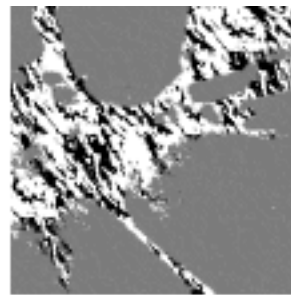
Although the more subtle of the fifty images are not feasible to execute in pickup lampas, they do suggest additional explorations which might be executed when I have access to a jacquard loom.



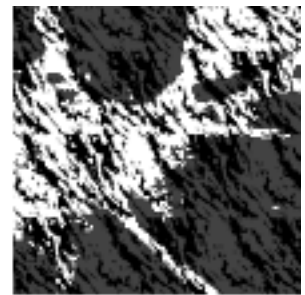
7.



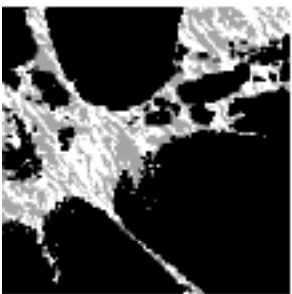
8.



9.



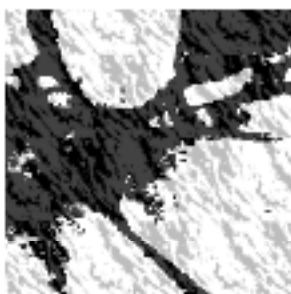
10.



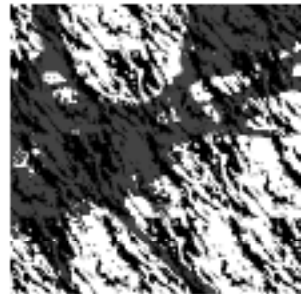
11.



12.



13.



14.